

NGEN[®]

EMPOWERING FUTURE



Designed in CANADA
Built to Last

CONTENTS

ARC WELDING SERIES

ARC 200
ARC 250
ARC 300
ARC 400
ARC 500

MIG WELDING SERIES

MIG 200
MIG 300
MIG 400W/T
MIG 500W/T
MIG 500DPW/T100
MIG 630W/T

TIG WELDING SERIES

TIG 220
TIG 300
TIG 400(P)

PLASMA CUTTING MACHINE SERIES

CUT 100
CUT 120
CUT 200

TIG/ACDC WELDING MACHINE SERIES

ACDC 200
ACDC 315
ACDC 500

LASER WELDING MACHINE SERIES

LW 1.5KW
LW 2.0KW
LW 3.0KW

GAU WELDING MACHINE SERIES

GAU 630
GAU 1000

SAW WELDING MACHINE SERIES

SAW 1250

CONSUMABLES

ARC-200 ARC-250 ARC-300



- ✓ 30m Welding Cable 1.6 to 3.2mm Rod
- ✓ Generator Friendly Compatible
- ✓ Wide Voltage AC 176V-280V

ARC-250

- ✓ 30m Welding Cable 1.6 to 3.2mm Rod to 30m Welding Cable 1.6 to 4.0mm Rod



Product Features

- Pure digital 32-bit MCU control, fast response speed
- High speed DC fan with low temperature rise of power components
- LED screen display, multiple adjustable parameters
- Dual voltage series voltage automatic recognition, safe and reliable
- Strong resistance to power grid fluctuations, stable welding even when the power grid is unstable
- Independent adjustment of welding current, arc initiation current, and thrust current
- Low voltage anti electric shock VRD function
- Built in anti sticking function
- Comprehensive protection against overcurrent and overheating



Technical Parameters

ARC-200		ARC-250		ARC-300	
Model	ARC-200	Model	ARC-250	Model	ARC-300
Voltage(V)	220V±15%	Voltage(V)	220V±15%	Voltage(V)	220V/380V
Frequency(Hz)	50/60	Frequency(Hz)	50/60	Frequency(Hz)	50/60
No-load Voltage(V)	60	No-load Voltage(V)	65	No-load Voltage(V)	67
Current Range(A)	20-180	Current Range(A)	20-240	Current Range(A)	20-240
Input Power(KVA)	8.4	Duty Cycle	40%	Duty Cycle	35%
Duty Cycle	35%	Welding Rod(mm)	∅ 1.6 to 4.0	Welding Rod(mm)	∅ 1.6-4.0
Welding Rod(mm)	∅ 1.6-3.2	Power Factor %	0.73	Power Factor %	0.73
Power Factor %	0.73	Insulation Grade	F	Insulation Grade	F
Insulation Grade	F	Protection Grade	IP21S	Protection Grade	IP21S
Protection Grade	IP21S	Weight(Kg)	8	Weight(Kg)	13
Weight(Kg)	5.5	(L*W*H)(mm)	380*210*340	(L*W*H)(mm)	380*210*340
(L*W*H)(mm)	345*155*270	Carton CBM(m³)	0.06	Carton CBM(m³)	0.06
Carton CBM(m³)	0.0376	Anti-stick function	●	Anti-stick function	●
Hot start	●	Arc force	●	Arc force	●
VRD	●	Hot start	●	Hot start	●
Automatic voltage compensation	●	VRD	●	VRD	●
Overheat protection	●	Automatic voltage compensation	●	Automatic voltage compensation	●
Under voltage protection	●	Overheat protection	●	Overheat protection	●
Over current protection	●	Under voltage protection	●	Under voltage protection	●
		Over current protection	●	Over current protection	●

Designed in CANADA
Built to Last

NGEN INDUSTRIES INCORPORATED
100 Matheson Boulevard East Mississauga
Ontario Canada
www.ngen-global.com



ARC-400 ARC-500



Product Features

- Excellent arcing, stable arc, little spatter and high duty cycle, which can reach 60% in 40°C. The current attenuation of the welding wire lengthened by 100M is not large, and can still meet the needs of high quality welding.
- Certified to Certification of EU (CE) and China Compulsory Certification (CCC).
- Hot start, anti-stick and arc force.



Technical Parameters

ARC-400	
Model	ARC-400
Voltage(V)	AC 380V±15%
Frequency(Hz)	50/60
No-load Voltage(V)	70
Current Range(A)	20-320A
Input Power(KVA)	13.3
Duty Cycle	60%
Welding Rod(mm)	ϕ 1.6-5.0
Power Factor %	0.93
Arc force Current range(A)	0-100A
Efficiency(%)	85
Insulation Grade	F
Protection Grade	IP21S
Weight(Kg)	14.7
(L*W*H)(mm)	420*215*360
Carton CBM(m ³)	0.077

Anti-stick function	●
Arc force	●
VRD Function	●
Hot arcing	●
Automatic voltage compensation	●
Overheat protection	●
Over voltage protection	●
Under voltage protection	●

ARC-500	
Model	ARC-500
Voltage(V)	AC 380V±15%
Frequency(Hz)	50/60
No-load Voltage(V)	70
Current Range(A)	20-360A
Input Power(KVA)	15.7
Duty Cycle	60%
Welding Rod(mm)	ϕ 1.6-6.0
Power Factor %	0.93
Arc force Current range(A)	0-100A
Efficiency(%)	85
Insulation Grade	F
Protection Grade	IP21S
Weight(Kg)	19.5
(L*W*H)(mm)	550*260*480
Carton CBM(m ³)	0.119

Anti-stick function	●
Arc force	●
Hot arcing	●
Automatic voltage compensation	●
Overheat protection	●
Over voltage protection	●
Under voltage protection	●

Designed in CANADA
Built to Last

NGEN INDUSTRIES INCORPORATED
100 Matheson Boulevard East Mississauga
Ontario Canada
www.ngen-global.com



MIG-200 MIG-300



- ✓ **Stable MCU Control System**
- ✓ **Post-welding wire-end droplet elimination function**
- ✓ **Unique welding dynamics control circuit**
- ✓ **A prompt feedback circuit that provides for stable arc can keep electric arc adjusted responsively as wire stick-out varies**



Product Features

- Digital tube display, built-in front air function, adjustable rear air time
- Weldable carbon steel, ordinary low-alloy steel, stainless steel
- Comprehensive protection against overcurrent and overheating
- IGBT inverter technology, fast dynamic response.
- Smooth and full spot welding joints, fast spot welding speed.
- Compact design with 15kg size inbuilt wire spool accepted.
- Adjustable inductance for controlling arc to optimize weld performance & Digital display for current and voltage.



Technical Parameters

MIG-200	
Model	MIG-200
Voltage(V)	200A/ 220V±15%
Frequency(Hz)	50/60
Input Power (KVA)	6.1
No-load Volt(V)	56
MIG Current Range(A)	30-160A
MMA Current Range(A)	20-160A
LIFT TIG Current Range(A)	20-160A
Duty Cycle	45%
FLUX MIG Wire dia(mm)	¢ 0.8/1.0
CO2 MIG Wire dia (mm)	¢ 0.6/0.8
MMA Welding Rod(mm)	¢ 1.6-3.2
Wire Spool Weight(KG)	1/5KG
Power Factor	0.73
Efficiency (%)	80
Insulation Grade	F
Protection Grade	IP21S
Weight(Kg)	8.3KG
(L*W*H) (mm)	386*180*246
Carton CBM(m³)	0.04

FLUX MIG	●
CO2/Mixed gas MIG	●
MMA	●
LIFT TIG	●
CHOKE	●
Automatic Voltage Compensation	●
Thermal Protection	●
Over Current Protection	●
Low voltage Protection	●
MIG Wire	Optional
MIG TORCH	15AK-2.5M

MIG-300	
Model	MIG-300
Input Voltage(V)	3 Phase AC380V ±15%
Input Frequency(Hz)	50/60
Input Power (KVA)	9.4
Max Input Current(A)	14.3
Max Effective Input Current(A)	11.1
No-load Voltage(V)	52
Output Current(A)	50-270
Output Voltage(V)	27.5
Duty Cycle(%)	60
Efficiency(%)	85
Power Factor	0.93
Insulation Grade	F
Housing Protective Grade	IP21S
Wire Feeder	Compact
Wire Spool Dia.(mm)	270/15Kgs
Wire dia.(mm)	0.8/1.0/1.2
Plate thickness(mm)	0.6 above
(L*W*H) (mm)	500*272*470
Carton CBM(m³)	0.117

MIG/MAG	●
MMA	●
Slow-feeding	●
Burn-back time	●
Inching	●
Inductance adjustable	●
Automatic voltage compensation	●
Thermal Protection	●
Over Loading Protection	●
Low voltage Protection	●
MIG TORCH	24KD/3M
Earth cable+Co2 regulator	2.5M+AC24V
Wire feeder type	Single drive roller

🇨🇦 **Designed in CANADA**
Built to Last

NGEN INDUSTRIES INCORPORATED
100 Matheson Boulevard East Mississauga
Ontario Canada
www.ngen-global.com



MIG-400W/T MIG-500W/T



- ✓ Post-welding wire-end droplet elimination function
- ✓ Unique welding dynamics control circuit
- ✓ A prompt feedback circuit that provides for stable arc can keep electric arc adjusted responsively as wire stick-out varies

Product Features

- Full bridge IGBT inverter technology, high reliability and less energy consumption, over-heat and over current protection.
- MIG and MMA combination enables multiple functions .
- Post-welding wire-end droplet elimination function, high no-load,slow wire feeding, high arc ignition successful rate.
- Unique welding dynamics control circuit; double drive wire feeding configuration to ensure stable arc, less spatter, fine welding bead & high welding efficiency.
- A prompt feedback circuit that provides for stable arc can keep electric arc adjusted responsively as wire stick-out varies.
- High duty circle can withstand long time high load welding



Technical Parameters

MIG-400	
Model	MIG-400
Input Voltage(V)	3 Phase AC380V ±15%
Input Frequency(Hz)	50/60
Input Power (KVA)	24.7
Max Input Current(A)	37.5
Max Effective Input Current(A)	29
No-load Voltage(V)	67
Output Current(A)	50-400
Output Voltage(V)	39
Duty Cycle(%)	60
Efficiency(%)	85
Power Factor	0.93
Insulation Grade	F
Housing Protective Grade	IP21S
Wire Feeder	External
Wire Spool Dia.(mm)	270/15Kgs
Wire dia.(mm)	0.8/1.0/1.2/1.6
Plate thickness(mm)	>0.6
(L*W*H) (mm)	580*280*530
Carton CBM(m ³) (Including wire feeder 0.055m ³)	0.2135

MIG/MAG	●
MMA	●
Slow-feeding	●
Burn-back time	●
Inching	●
Inductance adjustable	●
Crater	●
Automatic voltage compensation	●
Thermal Protection	●
Over Loading Protection	●
Low voltage Protection	●
MIG TORCH	40KD/3M
Earth cable+Co2 regulator	2.5M+AC36V
Wire feeder type	Double drive roller

MIG-500	
Model	MIG-500
Input Voltage(V)	3 Phase AC380V ±15%
Input Frequency(Hz)	50/60
Input Power (KVA)	27.2
Max Input Current(A)	41.3
Max Effective Input Current(A)	37
No-load Voltage(V)	67
Output Current(A)	50-530
Output Voltage(V)	40.5
Duty Cycle(%)	80
Efficiency(%)	85
Power Factor	0.93
Insulation Grade	F
Housing Protective Grade	IP21S
Wire Feeder	External
Wire Spool Dia.(mm)	270/15Kgs
Wire dia.(mm)	0.8/1.0/1.2/1.6
Plate thickness(mm)	>0.6
(L*W*H) (mm)	580*280*530
Carton CBM(m ³) (Including wire feeder 0.055m ³)	0.2135

MIG/MAG	●
MMA	●
Slow-feeding	●
Burn-back time	●
Inching	●
Inductance adjustable	●
Crater	●
Automatic voltage compensation	●
Thermal Protection	●
Over Loading Protection	●
Low voltage Protection	●
MIG TORCH	40KD/3M
Earth cable+Co2 regulator	2.5M+AC36V
Wire feeder type	Double drive roller

Designed in CANADA
Built to Last

NGEN INDUSTRIES INCORPORATED
100 Matheson Boulevard East Mississauga
Ontario Canada
www.ngen-global.com



MIG500DPW/T100



- ✓ **A prompt feedback circuit that provides for stable arc can keep electric arc adjusted responsively as wire stick-out varies**
- ✓ **Combined with computer technology, it adopts high-speed dual-processor DSP(Digital Sign Processor), highly integrated in 32-bit MCU.**
- ✓ **The MIG-500DP belt can store 10 sets of custom welding data**
- ✓ **Can weld aluminum and aluminum alloy, copper, stainless steel, alloy steel, carbon steel.**



MIG-500DP

Model	MIG-500DP
Rated Input Voltage (V)	380V±15%
Rated Input Frequency (Hz)	50/60
Rated Input Capacity (KVA)	25
Rated Load Duration (%)	60
Output No-Load Voltage (V)	70
Output current range (A)	20~500
Output voltage range (V)	14~50
Gas Flow Rate(L/min)	10~20
Torch cooling method	Water/Air Cooling
Enclosure Rating	IP21S
Insulation Class	F
(L*W*H) (mm)	590*280*565
Weight(Kg)	38
Carton CBM(m ³)	0.468

Integral trolley with fully enclosed disk cover wire feeding mechanism
Argon mete
Co2 meter
Water Tank
501D/3M

MIG-630W/T



- ✓ **Post-welding wire-end droplet elimination function**
- ✓ **Unique welding dynamics control circuit**
- ✓ **A prompt feedback circuit that provides for stable arc can keep electric arc adjusted responsively as wire stick-out varies**

Product Features

- Full bridge IGBT inverter technology, high reliability and less energy consumption, over-heat and over current protection.
- MIG and MMA combination enables multiple functions .
- Post-welding wire-end droplet elimination function, high no-load,slow wire feeding, high arc ignition successful rate.
- Unique welding dynamics control circuit; double drive wire feeding configuration to ensure stable arc, less spatter, fine welding bead & high welding efficiency.
- A prompt feedback circuit that provides for stable arc can keep electric arc adjusted responsively as wire stick-out varies.
- High duty circle can withstand long time high load welding

MIG-630

Model	MIG-630
Input Voltage(V)	3 Phase AC380V ±15%
Input Frequency(Hz)	50/60
Input Power (KVA)	33.4
Max Input Current(A)	50.7
Max Effective Input Current(A)	45.4
No-load Voltage(V)	76
Output Current(A)	50-600
Output Voltage(V)	44
Duty Cycle(%)	80
Efficiency(%)	85
Power Factor	0.93
Insulation Grade	F
Housing Protective Grade	IP21S
Wire Feeder	External
Wire Spool Dia.(mm)	270/15Kgs
Wire dia.(mm)	0.8/1.0/1.2/1.6
Plate thickness(mm)	>0.6
(L*W*H) (mm)	650*310*560
Carton CBM(m ³) (Including wire feeder 0.055m ³)	0.265

MIG/MAG	●
MMA	●
Slow-feeding	●
Burn-back time	●
Inching	●
Inductance adjustable	●
Crater	●
Automatic voltage compensation	●
Thermal Protection	●
Over Loading Protection	●
Low voltage Protection	●
MIG TORCH	40KD/3M
Earth cable+Co2 regulator	2.5M+AC36V
Wire feeder type	Double drive roller

Designed in CANADA
Built to Last

NGEN INDUSTRIES INCORPORATED
100 Matheson Boulevard East Mississauga
Ontario Canada
www.ngen-global.com



TIG-220 TIG-300 TIG-400(P)



- ✓ Excellent arcing and stable arc
- ✓ Stably start arcing at low current 10A
- ✓ No Arc Blow



Product Features

- High speed DC fan with low temperature rise of power components
- LED screen display, multiple adjustable parameters
- Strong resistance to power grid fluctuations, stable welding even when the power grid is unstable
- MCU control, fast response speed
- Argon ARC welding has 2T/4T function, convenient to use
- Weldable carbon steel, ordinary low-alloy steel, stainless steel
- Comprehensive protection against overcurrent and overheating



Technical Parameters

TIG-220	
Model	TIG-220
Voltage(V)	220V
Frequency(Hz)	50-60
Input Power (KVA)	9.6
No-load Volt(V)	56
TIG Current Range(A)	10-205
MMA Current Range(A)	20-200
Duty Cycle	40%
MMA Welding Rod(mm)	∅ 1.6-4.0
Power Factor	0.73
Efficiency(%)	85
Insulation Grade	F
Protection Grade	IP21S
Weight(Kg)	8
(L*W*H)(mm)	380*155*270
Carton CBM(m³)	0.04

TIG-300	
Model	TIG-300
Voltage(V)	380V±15%
Frequency(Hz)	50-60
Input Power (KVA)	11.5
No-load Volt(V)	56
TIG Current Range(A)	10-270
MMA Current Range(A)	20-240
Duty Cycle	40%
MMA Welding Rod(mm)	∅ 1.6-4.0
Power Factor	0.73
Efficiency(%)	85
Insulation Grade	F
Protection Grade	IP21S
Weight(Kg)	15
(L*W*H)(mm)	435*205*340
Carton CBM(m³)	0.078

TIG-400	
Model	TIG-400
Voltage(V)	380V±15%
Frequency(Hz)	50-60
Input Power (KVA)	15
No-load Volt(V)	56
TIG Current Range(A)	10-360
MMA Current Range(A)	20-350
Duty Cycle	60%
MMA Welding Rod(mm)	∅ 1.6-5.0
Power Factor	0.73
Efficiency(%)	85
Insulation Grade	F
Protection Grade	IP21S
Weight(Kg)	30
(L*W*H)(mm)	500*220*330
Carton CBM(m³)	0.09

TIG Post gas time adjustable	●
TIG Current down slope time	Optional
2T/4T	●
MMA function	●
MMA VRD	Optional
Automatic Voltage Compensation	●
Overheat protection	●
Under voltage protection	●
Over current protection	●
TIG TORCH	WP- 26B/ 4M

TIG Post gas time adjustable	●
TIG Current down slope time	●
2T/4T	●
MMA VRD	Optional
Automatic Voltage Compensation	●
Overheat protection	●
Under voltage protection	●
TIG TORCH	WP- 26/ 4M

TIG Post gas time adjustable	●
TIG Current down slope time	●
Pulse width adjustable	●
2T/4T	●
MMA function	●
MMA VRD	Optional
Automatic Voltage Compensation	●
Overheat protection	●
Under voltage protection	●
TIG TORCH	WP- 18/ 4M

Designed in CANADA
Built to Last

NGEN INDUSTRIES INCORPORATED
100 Matheson Boulevard East Mississauga
Ontario Canada
www.ngen-global.com



CUT-100 CUT-120 CUT-200



- ✓ Cutting speed fast, incision smooth, bright and clean
- ✓ Check gas and gas delay time
- ✓ Cut-65P1 has MMA function
- ✓ Excellent cutting and stable arc
- ✓ High quality CNC cutting

Product Features

- High speed DC fan with low temperature rise of power components
- LED screen display, multiple adjustable parameters
- Strong resistance to power grid fluctuations, stable welding even when the power grid is unstable
- MCU control, fast response speed



Technical Parameters

CUT-100	
Model	CUT-100
Voltage(V)	380V±15%
Frequency(Hz)	50-60
Input Power (KVA)	15.2
No-load Volt(V)	300
Current Range(A)	20~100A
Duty Cycle	60%
Arc Striking	HF/ Pilot Arc
Quality cutting thickness	28
Max. cutting Thickness	40
Proper Cutting Pressure	4~6
Power Factor	0.93
Efficiency(%)	85
Insulation Grade	F
Protection Grade	IP21S
Weight(Kg)	35
(L*W*H)(mm)	550*270*490
Carton CBM(m³)	0.119

Post Gas	●
Un-touch HF Pilot arc	●
Check Gas function	●
2T/4T	Optional
Thermal Protection	●
Low Voltage Protection	●
Automatic Voltage Compensation	●
Over Current Protection	●
Cutting Torch	P80-4M

CUT-120	
Model	CUT-120
Voltage(V)	380V ±15%
Frequency(Hz)	50-60
Input Power (KVA)	12
No-load Volt(V)	300
Current Range(A)	20~110A
Duty Cycle	60%
Arc Striking	HF/ Pilot Arc
Quality cutting thickness	25
Pierce Thickness	15
Proper Cutting Pressure	4~6
Max. cutting Thickness	45
Power Factor	0.93
Efficiency(%)	85
Insulation Grade	F
Protection Grade	IP21S
Weight(Kg)	23
(L*W*H)(mm)	550*270*490
Carton CBM(m³)	0.119

Pierce Cut	●
Un-touch HF Pilot arc	●
Check Gas function	●
2T/4T	●
Thermal Protection	●
Low Voltage Protection	●
Automatic Voltage Compensation	●
Cutting Speed	steel 10mm-500mm/min
Cutting Torch	A121-5M

CUT-200	
Model	CUT-200
Voltage(V)	380V ±15%
Frequency(Hz)	50-60
Input Power (KVA)	40
No-load Volt(V)	300
Current Range(A)	20~200A
Duty Cycle	80%
Arc Striking	HF/ Pilot Arc
Quality cutting thickness	40
Pierce Thickness	25
Proper Cutting Pressure	4~6
Max. cutting Thickness	70
Power Factor	0.93
Efficiency(%)	85
Insulation Grade	F
Protection Grade	IP21S
Weight(Kg)	70
(L*W*H)(mm)	670*365*960
Carton CBM(m³)	0.304

Pre Gas/Time	●
Post Gas/Time	●
Up slope/Time	●
Pierce Cut	●
Down slope/Time	●
Un-touch HF Pilot arc	●
Automatic Voltage Compensation	●
Check gas function	●
2T/4T	●
Thermal Protection	●
Low voltage Protection	●
Cutting Speed	steel 30mm-700mm/min
Cutting Torch	TK-260-7M

Designed in CANADA
Built to Last

NGEN INDUSTRIES INCORPORATED
100 Matheson Boulevard East Mississauga
Ontario Canada
www.ngen-global.com



ACDC-200 ACDC-315 ACDC-500



- ✓ Excellent arcing and stable arc
- ✓ Stably start arcing at low current 10A
- ✓ No Arc Blow



Product Features

- High speed fan cooling, low temperature rise of power components
- LCD screen display, multiple adjustable parameters
- Strong resistance to power grid fluctuations, stable welding even when the power grid is unstable
- 32-bit MCU control, fast response speed
- DC Manual welding, AC/DC/Pulse ITG Function, one machine for multiple use
- The Multifunctional machine has both 2T/4T functions for efficient welding
- Weldable Carbon steel, Low-alloy steel, Stainless Steel, Aluminium and Aluminium alloy products



Technical Parameters

ACDC-200	
Model	ACDC-200
Voltage(V)	220V
Frequency(Hz)	50-60
Input Power (KVA)	6.7
No-load Volt(V)	56
TIG Current Range(A)	10-180
MMA Current Range(A)	20-160
Duty Cycle	35%
MMA Welding Rod(mm)	¢ 1.6-3.2
Power Factor	0.73
Efficiency(%)	85
Insulation Grade	F
Protection Grade	IP21S
Weight(Kg)	7.5
(L*W*H)(mm)	380*155*27
Carton CBM(m³)	0.04

ACDC-315	
Model	ACDC-315
Voltage(V)	380V
Frequency(Hz)	50-60
Input Power (KVA)	11.5
No-load Volt(V)	56
TIG Current Range(A)	10-300
MMA Current Range(A)	20-220
Duty Cycle	40%
MMA Welding Rod(mm)	¢ 1.6-4.0
Power Factor	0.73
Efficiency(%)	85
Insulation Grade	F
Protection Grade	IP21S
Weight(Kg)	15
(L*W*H)(mm)	515*205*340
Carton CBM(m³)	0.078

ACDC-500	
Model	ACDC-500
Voltage(V)	380V & 3P220V
Frequency(Hz)	50-60
Input Power (KVA)	19
No-load Volt(V)	56
TIG Current Range(A)	10-500
MMA Current Range(A)	20-400
Duty Cycle	60%
MMA Welding Rod(mm)	¢ 1.6-5.0
Power Factor	0.73
Efficiency(%)	85
Insulation Grade	F
Protection Grade	IP21S
Weight(Kg)	50
(L*W*H)(mm)	670*440*790
Carton CBM(m³)	0.233

Pre-gas	●
Post gas	●
Current up-slope	●
Current down-slope	●
Pulse frequency adjustable	●
Clean width adjustable	●
Automatic Voltage Compensation	●
Pulse width adjustable	●
2T/4T	●
TIG TORCH	WP-26B-4M
Overheat protection	●
Under voltage adjustable	●

Pre-gas	●
Post gas	●
Current up-slope	●
Current down-slope	●
Pulse frequency adjustable	●
Clean width adjustable	●
Automatic Voltage Compensation	●
Pulse width adjustable	●
2T/4T	●
TIG TORCH	WP-18-4M
Overheat protection	●
Under voltage adjustable	●

Pre-gas	●
Post gas	●
Current up-slope	●
Current down-slope	●
Pulse frequency adjustable	●
Clean width adjustable	●
Automatic Voltage Compensation	●
Pulse width adjustable	●
2T/4T	●
TIG TORCH	WP-12-4M
Overheat protection	●
Under voltage adjustable	●

Designed in CANADA
Built to Last

NGEN INDUSTRIES INCORPORATED
100 Matheson Boulevard East Mississauga
Ontario Canada
www.ngen-global.com

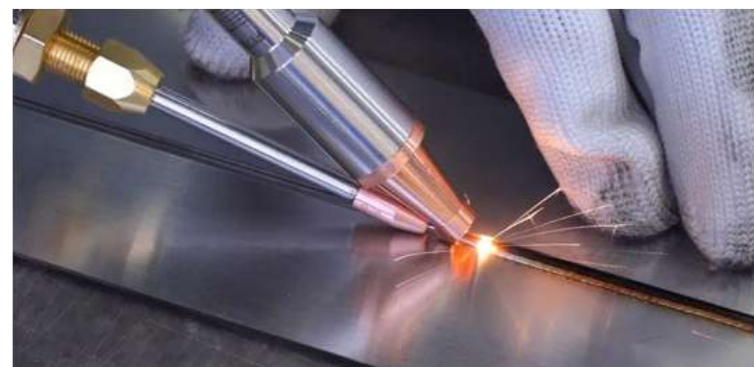


LW1.5KW LW2.0KW LW3.0KW



Product Features

- Operates 3–10x faster than traditional arc welding
- Automated control ensures uniform weld width and depth, minimizing grinding and polishing.
- Precise system controls produce consistent joints with a narrow heat-affected zone. This prevents deformation and eliminates the need for time-consuming post-weld grinding and polishing.
- Virtually zero spatter and toxic fumes, creating a much safer, cleaner environment compared to traditional welding.
- Includes a full set of nozzles for all joint types and can be integrated with robots or CNC systems.



Technical Parameters

LW-1.5KW	
Model	LW-1.5KW
Input Voltage(V)	AC220V±15%
Laser Source Power(W)	1500(Brand:Max)
Wavelength of laser(nm)	1070-1090
Output Optical Fiber Length(m)	10
Working Mode	Continuous/Adjustable
Working Speed(mm/s)	0~120
Cooling Method	Inbuilt water chiller
Wire Feeder	Separate
Working Temperature(°C)	15~35
Working Humidity	< 70% non-condensing
Welding Depth(mm)	0-5
Welding Beam Width(mm)	0-5
Dimension(cm)	Power 95*75*103
(L*W*H)(mm)	Wire Feeder 60*30*40
Welding Material	Carbon Steel,Stainless Steel, Aluminium,Brass Etc.

LW-2.0KW	
Model	LW-2.0KW
Input Voltage(V)	AC220V±15%
Laser Source Power(W)	1500(Brand:Max)
Wavelength of laser(nm)	1070-1090
Output Optical Fiber Length(m)	10
Working Mode	Continuous/Adjustable
Working Speed(mm/s)	0~120
Cooling Method	Inbuilt water chiller
Wire Feeder	Separate
Working Temperature(°C)	15~35
Working Humidity	< 70% non-condensing
Welding Depth(mm)	0-5
Welding Beam Width(mm)	0-5
Dimension(cm)	Power 126*75*111
(L*W*H)(mm)	Wire Feeder 60*30*40
Welding Material	Carbon Steel,Stainless Steel, Aluminium,Brass Etc.

LW-3.0KW	
Model	LW-3.0KW
Input Voltage(V)	AC380V±15%
Laser Source Power(W)	1500(Brand:Max)
Wavelength of laser(nm)	1070-1090
Output Optical Fiber Length(m)	10
Working Mode	Continuous/Adjustable
Working Speed(mm/s)	0~120
Cooling Method	Inbuilt water chiller
Wire Feeder	Separate
Working Temperature(°C)	15~35
Working Humidity	< 70% non-condensing
Welding Depth(mm)	0-5
Welding Beam Width(mm)	0-5
Dimension(cm)	Power 126*75*111
(L*W*H)(mm)	Wire Feeder 60*30*40
Welding Material	Carbon Steel,Stainless Steel, Aluminium,Brass Etc.

Laser Welding	●
Laser Cutting	●
Configuration	
Optical Fibre Cable	10m
Digital Wire Feeder(double rollers)	●
Laser Welding Torch	2 pcs
Wire Feeding Liner(0.8/1.0 roller 2pcs)	3m
Wire Feeding Liner(1.0/1.2 roller 2pcs)	4m
Welding Copper Nozzle	6 pcs
Cutting Nozzle	1 pcs
Protective Lens	5 pcs
Gas Hose	3m
Goggle	1 pcs
Spanner	1 set

Laser Welding	●
Laser Cutting	●
Configuration	
Optical Fibre Cable	10m
Digital Wire Feeder(double rollers)	●
Laser Welding Torch	2 pcs
Wire Feeding Liner(0.8/1.0 roller 2pcs)	3m
Wire Feeding Liner(1.0/1.2 roller 2pcs)	4m
Welding Copper Nozzle	6 pcs
Cutting Nozzle	1 pcs
Protective Lens	5 pcs
Gas Hose	3m
Goggle	1 pcs
Spanner	1 set

Laser Welding	●
Laser Cutting	●
Configuration	
Optical Fibre Cable	10m
Digital Wire Feeder(double rollers)	●
Laser Welding Torch	2 pcs
Wire Feeding Liner(0.8/1.0 roller 2pcs)	3m
Wire Feeding Liner(1.0/1.2 roller 2pcs)	4m
Welding Copper Nozzle	6 pcs
Cutting Nozzle	1 pcs
Protective Lens	5 pcs
Gas Hose	3m
Goggle	1 pcs
Spanner	1 set

🇨🇦 **Designed in CANADA**
Built to Last

NGEN INDUSTRIES INCORPORATED
100 Matheson Boulevard East Mississauga
Ontario Canada
www.ngen-global.com



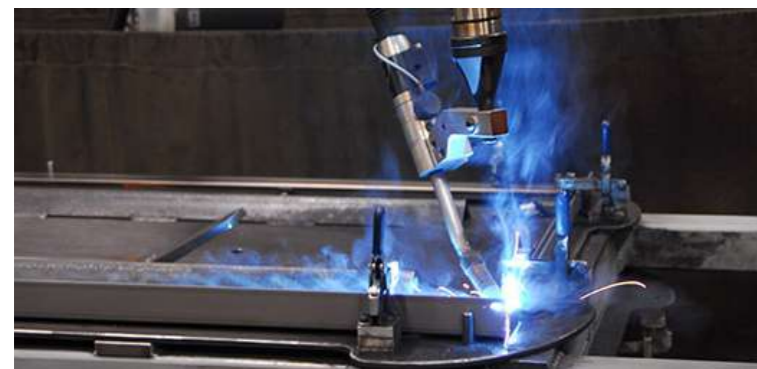
GAU-630PR GAU-1000PR



- ✓ GAU Welding machine is a high-power welding power source for heavy industry.
- ✓ Suitable for welding thick steel plates of shipbuilding industry, steel structures and large pressure vessels

Product Features

- Strong ability to resist power grid fluctuations, the welding machine can work normally when the grid power is 320V~480V;
- 1000A/44V, 100% duty cycle; max short-circuited current is 1500A.
- Multiple output modes; suitable for MM/arc gouging, CC SAW/CV SAW.
- Imported top brands power devices (INFINEON) ensures high reliability.
- Multiple protection including over-current, over-heat, phase loss, overvoltage and undervoltage protections.
- Professional 3-proofing designs ensure well operation in extremely harsh environment.



Technical Parameters

GAU-630	
Model	GAU-630
Input Voltage(V)	3 Phase AC380V ±15%
Input Frequency(Hz)	50/60
Input Power (KVA)	33.4
Max Input Current(A)	50.7
Max Effective Input Current(A)	45.4
No-load Voltage(V)	76
Output Current(A)	50-600
Output Voltage(V)	44
Duty Cycle(%)	80
Efficiency(%)	85
Power Factor	0.93
Insulation Grade	F
Housing Protective Grade	IP21S
Wire Feeder	External
Wire Spool Dia.(mm)	270/15Kgs
Wire dia.(mm)	0.8/1.0/1.2/1.6
Plate thickness(mm)	>0.6
(L*W*H) (mm)	650*310*560
Carton CBM(m ³) (Including wire feeder 0.055m ³)	0.265

MIG/MAG	●
MMA	●
Slow-feeding	●
Burn-back time	●
Inching	●
Inductance adjustable	●
Crater	●
Automatic voltage compensation	●
Thermal Protection	●
Over Loading Protection	●
Low voltage Protection	●
MIG TORCH	40KD/3M
Earth cable+Co2 regulator	2.5M+AC36V
Wire feeder type	Double drive roller

GAU-100	
Model	GAU-1000
Input Voltage(V)	3 Phase AC380V ±15%
Input Frequency(Hz)	50/60
Input Rated Power (KVA)	55
Rated Max Input Current(A)	85
Max Effective Input Current(A)	85
No-load Voltage(V)	90
Output Current(A)	100-1000
Output Voltage(V)	44
Duty Cycle(%)	100
Efficiency(%)	85
Power Factor	0.93
Insulation Grade	H
Housing Protective Grade	IP21S
Wire dia.(mm)	2.0/3.2/4.0/5.0
(L*W*H) (mm)	760*380*820
MZ machine Carton CBM(m ³)	0.298
MZ Trolley machine(m ³)	0.443

SAW	●
MMA	●
Carbon Arc Gouging	●
CC Mode	●
CV Mode	●
Automatic voltage compensation	●
Thermal Protection	●
Over Loading Protection	●
Low voltage Protection	●
Earth cable	70mm ² /5m/ 2 sets
Welding cable	70mm ² /10m/ 2 sets
Control cable	14 pins/10m
Track	1m/2 pieces

🇨🇦 **Designed in CANADA**
Built to Last

NGEN INDUSTRIES INCORPORATED
100 Matheson Boulevard East Mississauga
Ontario Canada
www.ngen-global.com



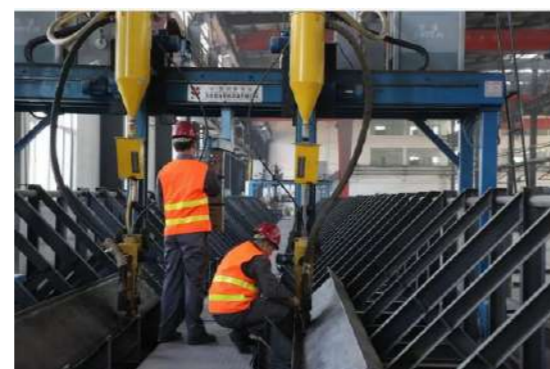
SAW-1250



- ✓ SAW welding machine is a high-power welding power source for heavy industry.
- ✓ Suitable for welding thick steel plates of shipbuilding industry, steel structures and large pressure vessels

Product Features

- Strong ability to resist power grid fluctuations, the welding machine can work normally when the grid power is 320V~480V;
- 1000A/44V, 100% duty cycle; max short-circuited current is 1500A.
- Multiple output modes; suitable for MM/arc gouging, CC SAW/CV SAW.
- Imported top brands power devices (INFINEON) ensures high reliability.
- Multiple protection including over-current, over-heat, phase loss, overvoltage and undervoltage protections.
- Professional 3-proofing designs ensure well operation in extremely harsh environment.



Technical Parameters

SAW-1250	
Model	SAW-1250
Input Voltage(V)	3 Phase AC380V ±15%
Input Frequency(Hz)	50/60
Input Rated Power (KVA)	70
Rated Max Input Current(A)	105
Max Effective Input Current(A)	81
No-load Voltage(V)	90
Output Current(A)	100-1250
Output Voltage(V)	44
Duty Cycle(%)	60
Efficiency(%)	85
Power Factor	0.93
Insulation Grade	H
Housing Protective Grade	IP21S
Wire dia.(mm)	2.0/3.2/4.0/5.0
(L*W*H) (mm)	760*380*820
MZ machine Carton CBM(m ³)	0.298
MZ Trolley machine(m3)	0.443

SAW	●
MMA	●
Carbon Arc Gouging	●
CC Mode	●
CV Mode	●
Automatic voltage compensation	●
Thermal Protection	●
Over Loading Protection	●
Low voltage Protection	●
Earth cable	70mm ² /5m/ 2 sets
Welding cable	70mm ² /10m/ 2 sets
Control cable	14 pins/10m
Track	1m/2 pieces

Designed in CANADA
Built to Last

NGEN INDUSTRIES INCORPORATED
100 Matheson Boulevard East Mississauga
Ontario Canada
www.ngen-global.com



MIG CONSUMABLES



**CONTACT TIP
M6X0.8MM**



**CONTACT TIP
M6X1.0M**



**CONTACT TIP
M8X1.2MM**



PN- CONTACT TIP



MIG ROLLER



MIG TORCH



**TIP HOLDER &
GAS NOZZLE**



PN-GAS DIFFUSER

TIG CONSUMABLES



COLLET 2.4



COLLET 3.2



COLLET BODY



TIG TORCH



**PN- CERAMIC CUP
NOZZLE**



PN-TIG TORCH

PLASMA CONSUMABLES



**PLASMA CUTTING
TIP**



PLASMA ELECTRODE



PLASMA NOZZLE

LASER CONSUMABLES



LASER NOZZLE

SAW/GOUGING CONSUMABLES



SAW NOZZLE